

#### Tender specification: (examples)

Oventrop connection fittings made of nickel plated brass, for the connection of radiators with integrated distributor G ¼ male thread according to DIN EN 16313 (cone “Euro”).

ZB preset isolating fitting for two pipe systems for filling and draining

G ¼ collar nut x G ¼ male thread

Oventrop connection fittings made of nickel plated brass, for the connection of radiators with integrated distributor G ½ female thread.

ZB preset isolating fitting for two pipe systems for filling and draining

G ½ male thread x G ¼ male thread

#### Technical data:

Operating temperature  $t_s$ : 2 °C up to 120 °C (for short periods up to 130 °C)

Max. operating pressure  $p_s$ : 10 bar

Fluid: Water or suitable ethylene/propylene glycol water mixtures according to VDI 2035/ÖNORM 5195 (max. glycol proportion 50 %, pH value 6.5-10).  
Not suitable for steam, oily and aggressive fluids.

#### Function:

The Oventrop fittings “Multiflex” are designed for the connection of radiators with integrated distributor.

The extensive programme fulfils the following functions:

- Connecting
- Isolating
- One pipe operation
- Draining
- Filling
- Presetting
- Re-directing
- Bridging

#### Application:

The Oventrop fittings “Multiflex” for radiators with integrated distributor are suitable for use in two or one pipe central heating and cooling systems with closed circuits for operation with non-aggressive, harmless fluids.

For use of radiators with integrated distributor in one pipe systems, special ZBU fittings (two pipe block, convertible) are available. In addition, Oventrop offers inversion fittings to achieve the correct direction of flow if the supply and return pipe were mixed up and bridging fittings to fix the pipework and to bridge over the supply and return pipe in case of subsequent installation of radiators.

#### “Multiflex F” - soft sealing

The connection of the fitting to the radiator is soft sealing.

#### Advantages of the “Multiflex F” fittings:

- all connection problems of radiators with integrated distributor can be solved
- easy to use
- suitable for one or two pipe systems (ZBU)
- increased leakage proofing due to soft sealing connection
- exact setting of the radiator shares via the bypass screw (ZBU) in lengthwise direction
- excellent flow rates of the ZBU fittings when used with Oventrop thermostats (see chart)



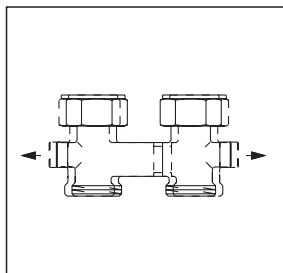
“Multiflex”

#### “Multiflex V” - metal to metal tapered sealing

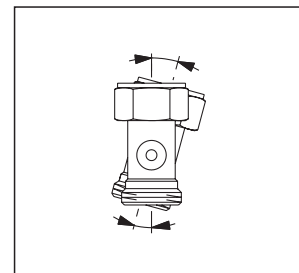
The connection of the fitting to the radiator has a metal to metal tapered seal.

#### Advantages of the “Multiflex V” fittings:

- all connection problems of radiators with integrated distributor can be solved
- fittings with facilities for:
  - isolating
  - presetting
  - draining
  - filling
- easy to use
- suitable for one or two pipe systems
- tolerances in the connection dimensions of the supply and return nipples are technically perfectly balanced (patented solution) which means that there is no cross tension (see illustration)
- increased leakage proofing due to metal to metal tapered seal to the radiator
- no inner parts necessary to take elastic seals, therefore two points less where leakage could occur
- technical top performance regarding flow rates
- exact setting of the radiator shares via the bypass screw in lengthwise direction (CE fitting)



Advantage: Adjustable distance of axis



Advantage: Adjustable angled position

**Fittings “Multiflex V”  
metal to metal tapered sealing  
for two pipe heating systems:**

Fittings made of nickel plated brass  
for radiators with integrated distributor

**ZB fittings (ZB = two pipe block)**

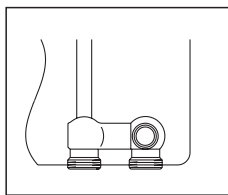
The ZB fittings (two pipe block) are used on radiators with two pipe distributors.

Balanced tolerance of the radiator connection due to patented body/shell connection.

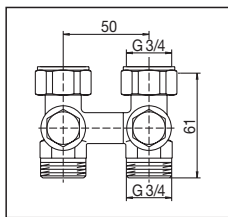
Distance between pipe centres: 50 mm

**G 3/4 male thread (distributor)**

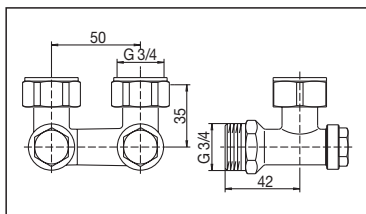
The connection of the fitting to the radiator has a metal to metal tapered seal.



For radiators with G 3/4 male thread according to DIN EN 16313 (cone “Euro”)



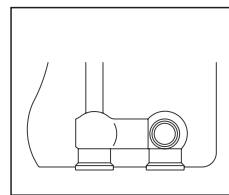
ZB preset isolating fitting for filling and draining  
G 3/4 c/nut x G 3/4 male  
Item no. 1016241



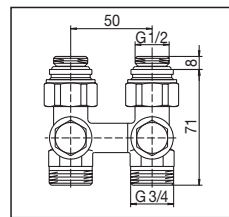
ZB angle pattern preset isolating fitting for filling and draining  
G 3/4 c/nut x G 3/4 male  
Item no. 1016242

**G 1/2 female thread (distributor)**

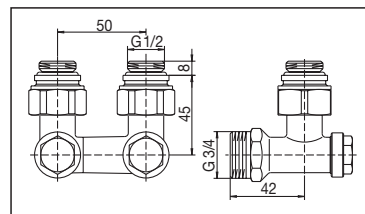
The connection of the fitting to the radiator has a metal to metal tapered seal. Self sealing nipples are supplied with each fitting.



For radiators with G 1/2 female thread



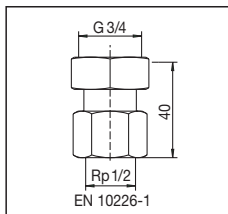
ZB preset isolating fitting for filling and draining  
G 1/2 male x G 3/4 male  
Item no. 1016291



ZB angle pattern preset isolating fitting for filling and draining  
G 1/2 male x G 3/4 male  
Item no. 1016292

**Single fitting**

The single fitting is used on radiators with two pipe distributor.



Fitting  
G 3/4 c/nut x Rp 1/2 F  
Item no. 1016304

Fittings with Rp 1/2 female thread are not suitable for compression fittings (only for threaded pipes).

**Fittings “Multiflex V”  
metal to metal tapered sealing  
for one pipe heating systems:**

Fittings made of nickel plated brass  
for radiators with integrated distributor.

**CE fittings (Combi one pipe)**

The CE fittings (Combi one pipe) are necessary to use radiators  
with two pipe distributors in **one pipe systems**.

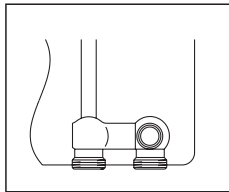
Preset radiator flow share: about 35 %\*

Balanced tolerance of the radiator connection due to patented  
body/shell connection.

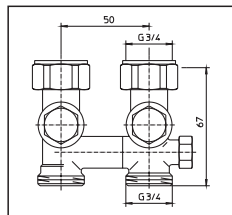
Distance between pipe centres: 50 mm

**G 3/4 male thread (distributor)**

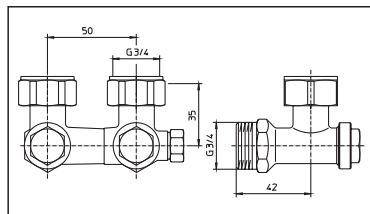
The connection of the fitting to the radiator has a metal to  
metal tapered seal.



For radiators with G 3/4 male thread  
according to DIN EN 16313 (cone  
“Euro”)



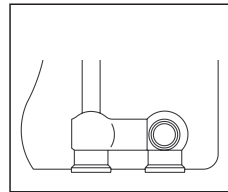
CE preset isolating  
fitting for filling and  
draining  
G 3/4 c/nut x G 3/4 male  
Item no. 1016341



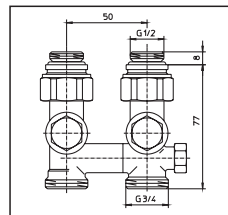
CE angle pattern  
preset isolating fitting  
for filling and draining  
G 3/4 c/nut x G 3/4 male  
Item no. 1016342

**G 1/2 female thread (distributor)**

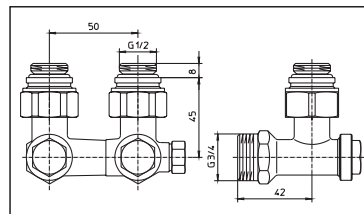
The connection of the fitting to the radiator has a metal to  
metal tapered seal. Self sealing nipples are supplied with each  
fitting.



For radiators with G 1/2 female thread



CE preset isolating  
fitting for filling and  
draining  
G 1/2 male x G 3/4 male  
Item no. 1016391



CE angle pattern  
preset isolating fitting  
for filling and draining  
G 1/2 male x G 3/4 male  
Item no. 1016392

\* If the bypass screw is turned clockwise until stop, then the bypass is closed (two pipe operation).

**Fittings “Multiflex F”**

**soft sealing**

**for two pipe systems or heating systems in one pipe operation**

Fittings made of nickel plated brass  
for radiators with integrated distributor

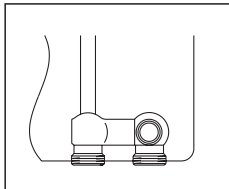
**ZB fittings (ZB = two pipe block)**

The ZB fittings (two pipe block) are used on radiators with two pipe distributors.

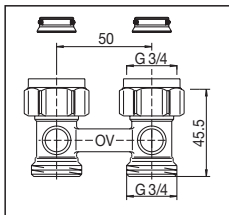
Distance between pipe centres: 50 mm

**G 3/4 male thread (distributor)**

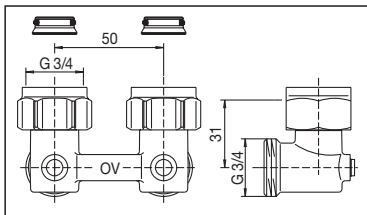
The connection of the fitting to the radiator is soft sealing. Soft sealing inserts are supplied with each fitting.



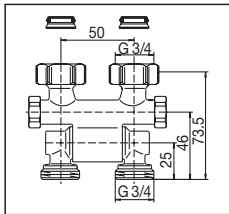
For radiators with G 3/4 male thread according to DIN EN 16313 (cone “Euro”)



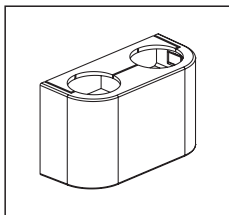
ZB isolating fitting  
G 3/4 c/nut x G 3/4 male  
Item no. 1015813



ZB angle pattern isolating fitting  
G 3/4 c/nut x G 3/4 male  
Item no. 1015814



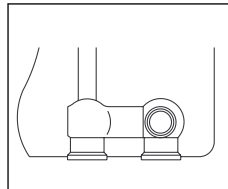
ZB isolating fitting, pivoting  
G 3/4 c/nut x G 3/4 male  
Item no. 1015711



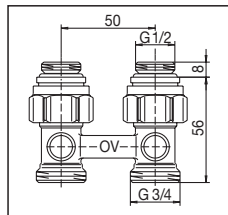
**Design cover, white**  
for ZB isolating fittings and angle pattern isolating fittings  
item no. 1015813/14/83/84  
Item no. 1015896

**G 1/2 female thread (distributor)**

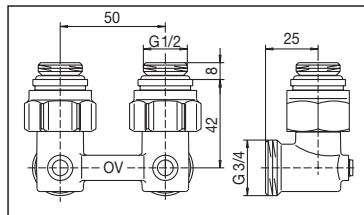
The connection of the fitting to the radiator is soft sealing. Soft sealing nipples are supplied with each fitting.



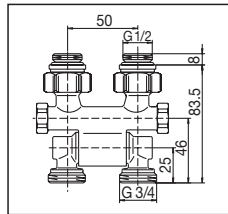
For radiators with G 1/2 female thread



ZB isolating fitting  
G 1/2 male x G 3/4 male  
Item no. 1015883



ZB angle pattern isolating fitting  
G 1/2 male x G 3/4 male  
Item no. 1015884



ZB isolating fitting, pivoting  
G 1/2 male x G 3/4 male  
Item no. 1015781

**Fittings “Multiflex F”**

**soft sealing**

**for two pipe systems or heating systems in one pipe operation**

Fittings made of nickel plated brass  
for radiators with integrated distributor

**ZBU fittings (ZBU = two pipe block, convertible)**

The ZBU fittings (two pipe block, convertible) can be used in both, two pipe systems (as delivered) or in systems in one pipe operation.

When used in one pipe systems, the bypass screw has to be set according to the installation instructions supplied with the fittings. CEW fitting as ZBU but preset to one pipe operation with a radiator share of 35 %.

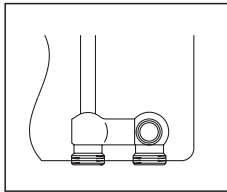
Distance between pipe centres: 50 mm

**G 3/4 male thread (distributor)**

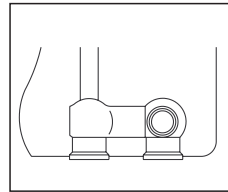
The connection of the fitting to the radiator is soft sealing. Soft sealing inserts are supplied with each fitting.

**G 1/2 female thread (distributor)**

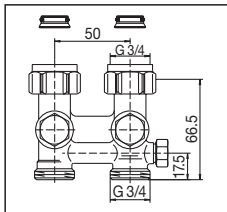
The connection of the fitting to the radiator is soft sealing. Soft sealing nipples are supplied with each fitting.



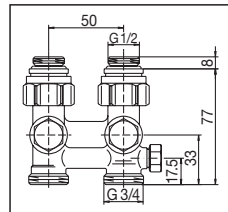
For radiators with G 3/4 male thread according to DIN EN 16313 (cone “Euro”)



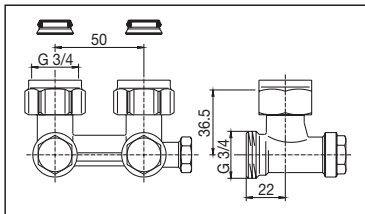
For radiators with G 1/2 female thread



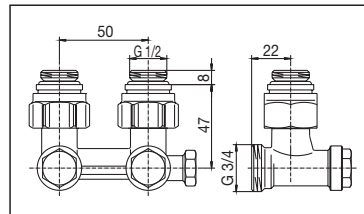
ZBU preset isolating fitting for filling and draining  
G 3/4 c/nut x G 3/4 male  
Item no. 1015943



ZBU/CEW preset isolating fitting for filling and draining  
G 1/2 male x G 3/4 male  
Item no. 1015993  
Item no. 1015933\*



ZBU angle pattern preset isolating fitting for filling and draining  
G 3/4 c/nut x G 3/4 male  
Item no. 1015944

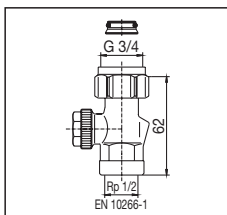


ZBU/CEW angle pattern preset isolating fitting for filling and draining  
G 1/2 male x G 3/4 male  
Item no. 1015994  
Item no. 1015934\*

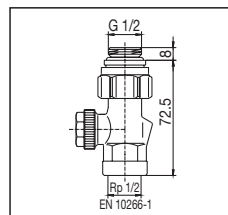
\* preset to one pipe operation

**Single fittings**

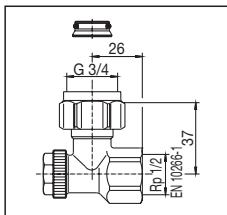
The single fittings are used in radiators with two pipe distributors.



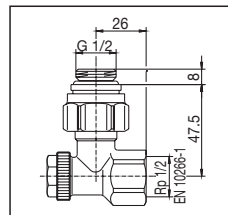
Preset isolating fitting for filling and draining  
G 3/4 c/nut x Rp 1/2 female  
Item no. 1016166  
G 3/4 c/nut x G 3/4 male  
Item no. 1016168



Preset isolating fitting for filling and draining  
G 1/2 male x Rp 1/2 female  
Item no. 1016175  
G 1/2 male x G 3/4 male  
Item no. 1016177



Angle pattern preset isolating fitting for filling and draining  
G 3/4 c/nut x Rp 1/2 female  
Item no. 1016567  
G 3/4 c/nut x G 3/4 male  
Item no. 1016569



Angle pattern preset isolating fitting for filling and draining  
G 1/2 male x Rp 1/2 female  
Item no. 1016575  
G 1/2 male x G 3/4 male  
Item no. 1016577

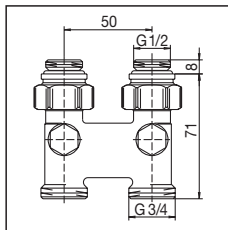
Fitting with Rp 1/2 female thread are not suitable for compression fittings (only for threaded pipes).  
The Oventrop compression fittings are to be used (see Oventrop catalogue “Products”).

**Fittings**

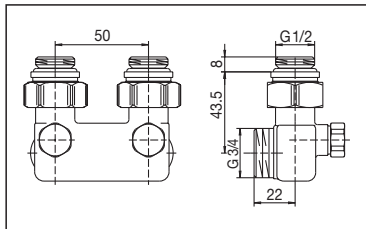
Brass

Inversion fitting, nickel plated

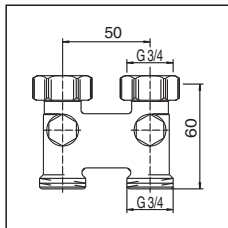
For reversed supply and return pipe.



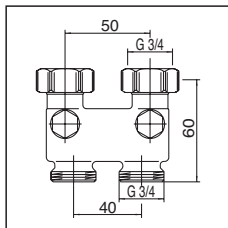
with isolating facility  
distance between pipe  
centres 50 mm  
G 1/2 male x G 3/4 male  
Item no. 1016363



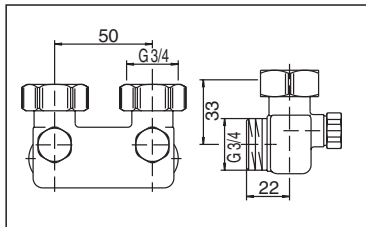
angle pattern,  
with isolating facility  
distance between pipe  
centres 50 mm  
G 1/2 male x G 3/4 male  
Item no. 1016463



with isolating facility  
distance between pipe  
centres 50 mm  
G 3/4 c/nut x G 3/4 male  
Item no. 1016362

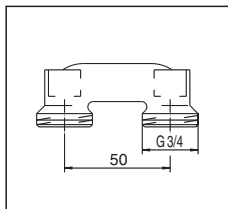


with isolating facility  
upper distance between  
pipe centres 50 mm,  
lower distance between  
pipe centres 40 mm  
G 3/4 c/nut x G 3/4 male  
Item no. 1016372

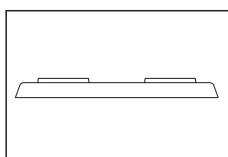


angle pattern,  
with isolating facility  
distance between pipe  
centres 50 mm  
G 3/4 c/nut x G 3/4 male  
Item no. 1016462

**Bridging fitting**



For bridging-over  
the supply and the  
return pipe in case of  
subsequent installation  
of radiators.  
Distance between pipe  
centres 50 mm  
Item no. 1016452



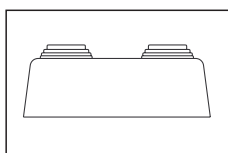
**Plastic rosette cover, white**

flat, distance between pipe centres

50 mm

Perforation

12 mm	<b>Item no.:</b>
14 mm	1016671
15 mm	1016672
16 mm	1016673
18 mm	1016674
	1016675

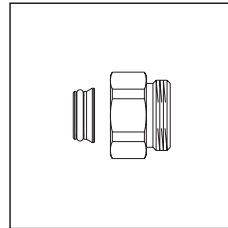


for pipe dimensions 10, 12, 15, 16, 18,  
20 mm

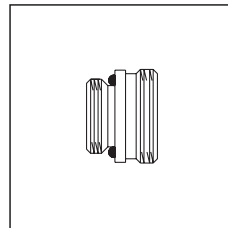
Distance between pipe centres 50 mm  
Item no. 1016662

**Connection fittings**

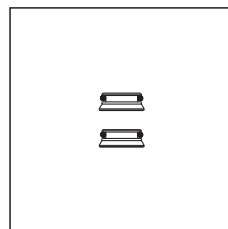
Brass



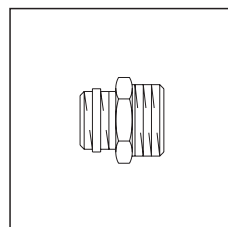
Distance piece  
For "Multiflex V" fittings  
Set = 2 pieces  
G 3/4 female x G 3/4 male  
Effective length: 15.5 mm  
Item no. 1681650



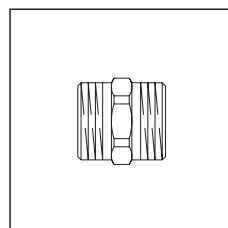
Nipple, unplated  
For "Multiflex F and FQ", "Multiblock  
T, TU, TFU, TQ, T-RTL and TQ-RTL"  
Port G 1/2: self sealing  
Port G 3/4: flat sealing  
G 1/2 male x G 3/4 male  
Item no. 1028252  
For "Multiflex V"  
Port G 3/4: with tapered sealing  
according to DIN EN 16313 (cone  
"Euro")  
G 1/2 male x G 3/4 male  
Item no. 1028253



Insert  
Set = 2 pieces  
for cone according to DIN EN 16313  
(cone "Euro")  
For "Multiflex F and FQ",  
"Multiblock T, TU, TFU, TQ, T-RTL  
and TQ-RTL"  
Item no. 1661100



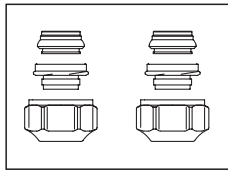
Nipple, nickel plated  
Port G 1/2: self sealing  
Port G 3/4: with tapered sealing  
according to DIN EN 16313 (cone  
"Euro")  
G 1/2 male x G 3/4 male  
Item no. 1028161



Double nipple, nickel plated  
G 3/4 with tapered sealing according  
to DIN EN 16313 (cone "Euro")  
G 3/4 male x G 3/4 male  
Item no. 1028263

Connection systems and accessories

Compression fittings for G 3/4 male thread according to DIN EN 16313 (cone “Euro”)



**“Ofix CEP”-Snap & Seal**

2-fold for copper pipes according to DIN EN 1057, precision steel pipes according to DIN EN 10305-1/2 and stainless steel pipes

Collar nut nickel plated, with double compression ring function, one-piece pre-assembled, soft sealing, max. 95 °C

10 mm	1016840
12 mm	1016841
14 mm	1016842
15 mm	1016843
16 mm	1016844
18 mm	1016845

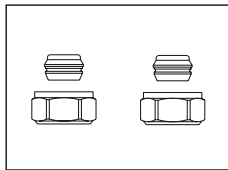
Operating temperature  $t_s$ : 2 °C - 95 °C  
Max. operating pressure  $p_s$ : 10 bar

Attention: When installing copper pipes with a wall thickness of  $\leq 1$  mm, it is necessary to use reinforcing sleeves for the additional stabilisation of the pipe. Should the wall thickness exceed 1 mm, please contact the pipe manufacturer. Reinforcing sleeves for a wall thickness of 1 mm can be found in the catalogue “Products”.

Exception:

Reinforcing sleeves are not required for soft sealing compression fittings.

Note: The pipes are not held by the soft sealing fitting, they have to be fixed additionally. Regarding stretching of the pipe ends, the instructions of the pipe manufacturer have to be observed.



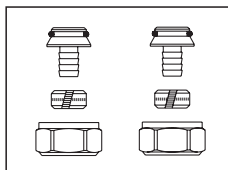
**“Ofix CEP”**

2-fold for copper pipes according to DIN EN 1057

Collar nut nickel plated, metal to metal sealing

10 mm	1016860
12 mm	1016861
14 mm	1016862
15 mm	1016863
16 mm	1016864
18 mm	1016865

Operating temperature  $t_s$ : 2 °C - 120 °C  
Max. operating pressure  $p_s$ : 10 bar



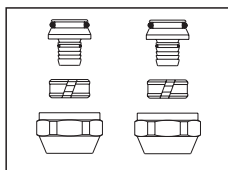
**“Ofix K”**

2-fold for plastic pipes according to DIN 4726, PE-X according to DIN 16892/16893, PB according to DIN 16968, PP according to DIN 8078 A1

Collar nut nickel plated, metal to metal sealing plus O-Ring

12 x 1.1 mm	1016883
12 x 2 mm	1016870
14 x 2 mm	1016873
15 x 2.5 mm	1016885
16 x 1.5 mm	1016882
16 x 2 mm	1016874
17 x 2 mm	1016876
18 x 2 mm	1016877
20 x 2 mm	1016879

The permissible operating pressures and operating temperatures depend on the application classes of the respective standards of the plastic pipework systems (e.g. PE-X, DIN EN ISO 15875).

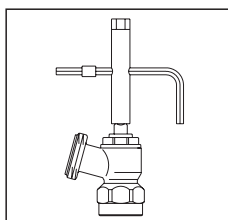


**“Cofit S”** for G 3/4 male thread according to DIN EN 16313 (cone “Euro”) universal application for composition pipe “Copipe” and, provided similar preparation as used, for plastic pipes (PE-X pipes) 2-fold, metal to metal sealing plus O-ring, outlet made of bronze, compression ring and collar nut made of brass, collar nut nickel plated

14 x 2.0 mm x G 3/4 c/nut	1507934
16 x 2.0 mm x G 3/4 c/nut	1507935
17 x 2.0 mm x G 3/4 c/nut	1507937
18 x 2.0 mm x G 3/4 c/nut	1507938
20 x 2.0 mm x G 3/4 c/nut	1507939
20 x 2.5 mm x G 3/4 c/nut	1507940

The permissible operating pressures and operating temperatures depend on the application classes of the respective standards of the plastic pipework systems (e.g. PE-X, DIN EN ISO 15875).

Alternatively, the compression fittings for connection to G 3/4 male thread according to DIN EN 16313 (cone “Euro”) of other manufacturers may also be used - except for composition pipe “Copipe”.



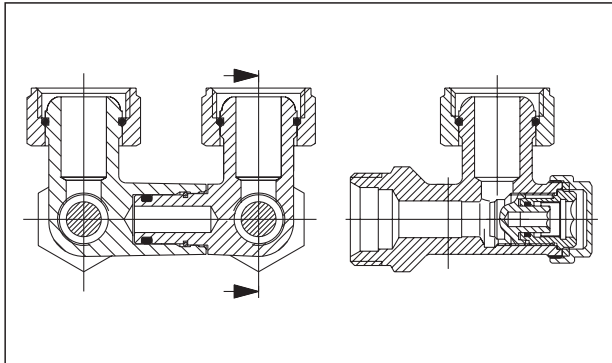
**Service tool with bag**

1090551

For filling and draining of the radiators via the isolating fittings: 1016241, 1016242, 1016341/42, 1016291, 1016292, 1016391/92, 1015993/94, 1015933/34, 1015943/44, 1016175/77, 1016575/77, 1016166/68, 1016567/69

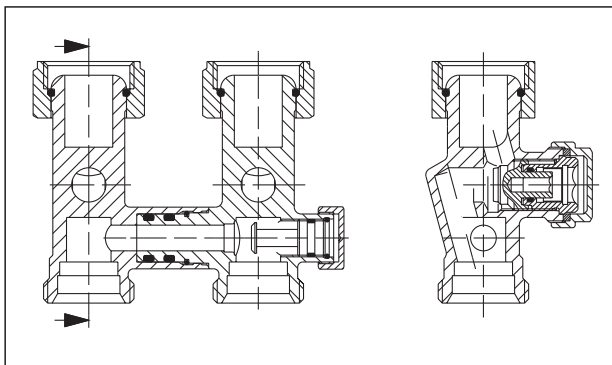
**Fittings “Multiflex V”  
metal to metal sealing**

**Sectional view of a two pipe fitting:**



ZB angle pattern preset isolating fitting  
for filling and draining  
Item no. 1016242

**Sectional view of a one pipe fitting:**



CE preset isolating fitting (Combi one pipe)  
for filling and draining  
Item no. 1016341

When using CE fittings in two pipe systems, the bypass screw has to be closed (turn clockwise until stop).

**Operating instructions:**

For ZB preset isolating fittings for filling and draining.

Item no. 1016241/42

Item no. 1016291/92

Setting for one pipe operation:

The CE fittings are preset at works to a radiator share of about 35% of the circulated water quantity.

Different radiator shares must be set according to the flow charts.

Close the bypass stem (turn fully clockwise) and open the stem according to the number of turns taken from the chart.

Item no. 1016341/42

Item no. 1016391/92

**1 Isolating:**

1.1 Unscrew the protection caps.

1.2 Close the valve disc by turning a 4 mm spanner clockwise.

**2 Draining:**

2.1 Isolate the fitting as described in point 1.

2.2 Loosen the valve insert of the return pipe connection by turning a 10 mm spanner anticlockwise (max. ¼ thread).

2.3 Fit the service tool to the return pipe connection of the fitting and connect a hose.

2.4 Fit the 10 mm spanner to the service tool and drain the radiator by turning anticlockwise.

The venting screw at the radiator has to be opened.

**3 Filling:**

3.1 Via the service tool:

3.1.1 If the radiator was just drained via the service tool, no modifications to the tool or the fitting are required. The radiator can now be filled via the connected hose (now the radiator has to be bled).

3.1.2 With the filling operation completed, fit the 10 mm spanner to the service tool again and close the insert by turning clockwise.

3.1.3 Remove the service tool and tighten the insert with the 10 mm spanner (max. 10 Nm).

3.2 Via the heating system:

3.2.1 Close the fitting by turning a 10 mm spanner clockwise and tighten it (max. 10 Nm).

3.2.2 Open the valve disc by turning a 4 mm spanner anticlockwise until stop. Bleed the radiator.

3.2.3 Refit the protection caps.

Filling and draining of the radiator with the help of the service tool, item no. 1090551.

**4 Presetting:**

4.1 Unscrew the protection cap.

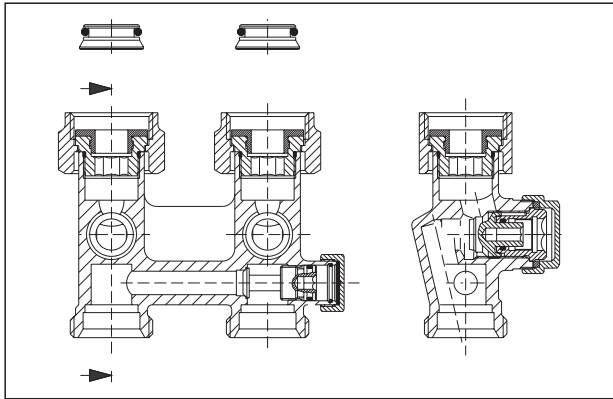
4.2 Close the valve disc by turning a 4 mm spanner clockwise.

4.3 Then preset the valve disc by turning the 4 mm spanner anticlockwise according to the number of turns selected from the flow chart.

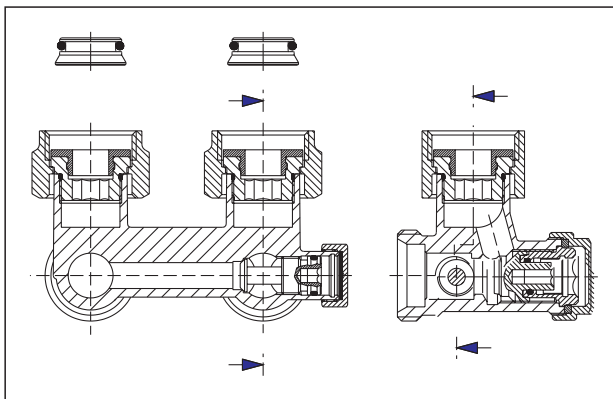


**Fittings “Multiflex F”  
soft sealing**

**Sectional view of the two pipe fittings ZBU and CEW:**



ZBU preset isolating fitting for filling and draining  
Item no. 1015943



ZBU angle pattern preset isolating fitting for filling and draining  
Item no. 1015944

The bypass stem of the CEW fitting is opened according to the radiator share (35 %).

**Operating instructions:**

For ZBU/CEW preset isolating fittings for filling and draining  
Item no. 1015943/44 ZBU  
1015993/94 ZBU  
1015933/34 CEW

For single fittings  
Item no. 1016166/68  
1016567/69  
1016175/77  
1016575/77

**1 Isolating:**

- 1.1 Unscrew the protection caps.
- 1.2 Close the valve disc by turning a 4 mm spanner clockwise.

**2 Draining:**

- 2.1 Isolate the fitting as described in point 1.
- 2.2 Loosen the valve insert of the return pipe connection by turning a 10 mm spanner anticlockwise (max. 1/4 thread).
- 2.3 Fit the service tool to the return pipe connection and connect a hose.
- 2.4 Fit the 10 mm spanner to the service tool and drain the radiator by turning anticlockwise.

The venting screw at the radiator has to be opened.

**3 Filling:**

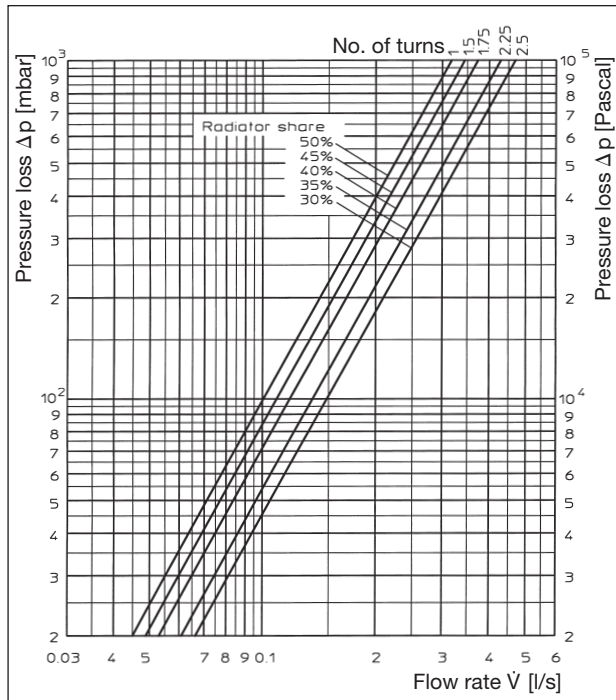
- 3.1 Via the service tool:
  - 3.1.1 If the radiator was just drained via the service tool, no modifications to the tool or the fitting are required. The radiator can now be filled via the connected hose (now the radiator has to be bled).
  - 3.1.2 With the filling operation completed, fit the 10 mm spanner to the service tool again and close the insert by turning clockwise.
  - 3.1.3 Remove the service tool and tighten the insert with the 10 mm spanner (max. 10 Nm).
- 3.2 Via the heating system:
  - 3.2.1 Close the fitting by turning a 10 mm spanner clockwise and tighten it (max. 10 Nm).
  - 3.2.2 Open the valve disc by turning a 4 mm spanner anticlockwise until stop. Bleed the radiator.
  - 3.2.3 Refit the protection caps.

Filling and draining of the radiator with the help of the service tool, item no. 1090551.

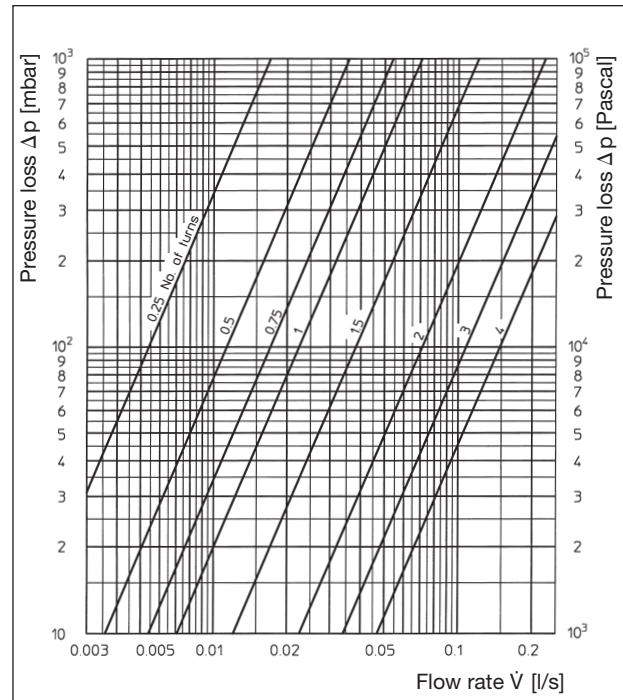
**4 Presetting:**

- 4.1 Unscrew the protection cap.
- 4.2 Close the valve disc by turning a 4 mm spanner clockwise.
- 4.3 Then preset the valve disc by turning the 4 mm spanner anticlockwise according to the number of turns selected from the flow chart.

**Fittings "Multiflex V"**  
metal to metal sealing



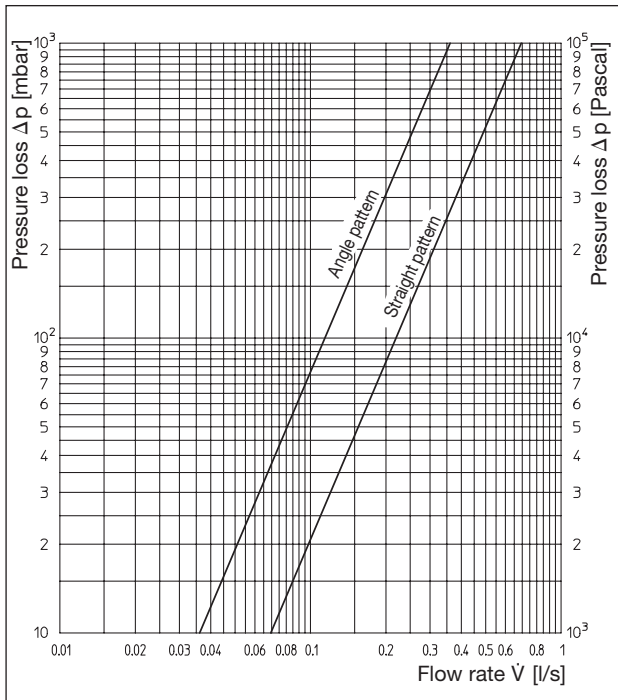
CE fittings  
Item no. 1016341/42  
1016391/92



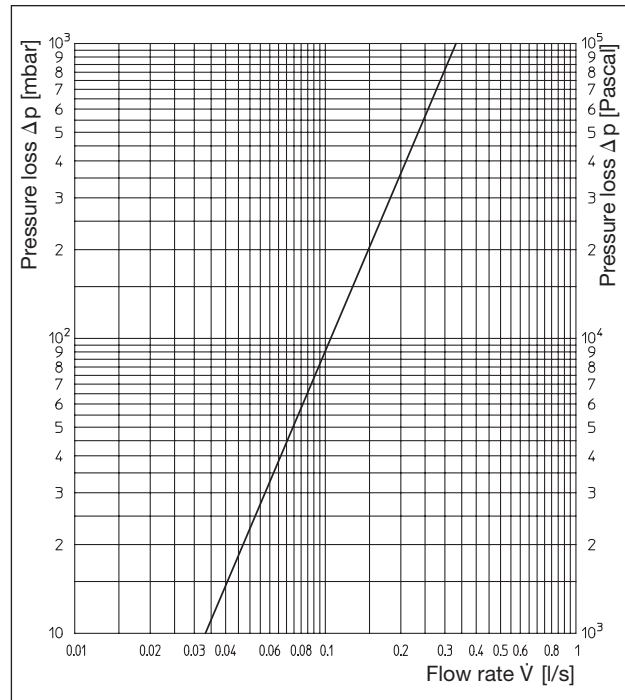
ZB fittings  
Item no. 1016241/42  
1016291/92

Presetting	0.25	0.5	0.75	1	1,5	2	3	4
$k_V$ value	0.060	0.126	0.190	0.250	0.420	0.819	1.236	1.700

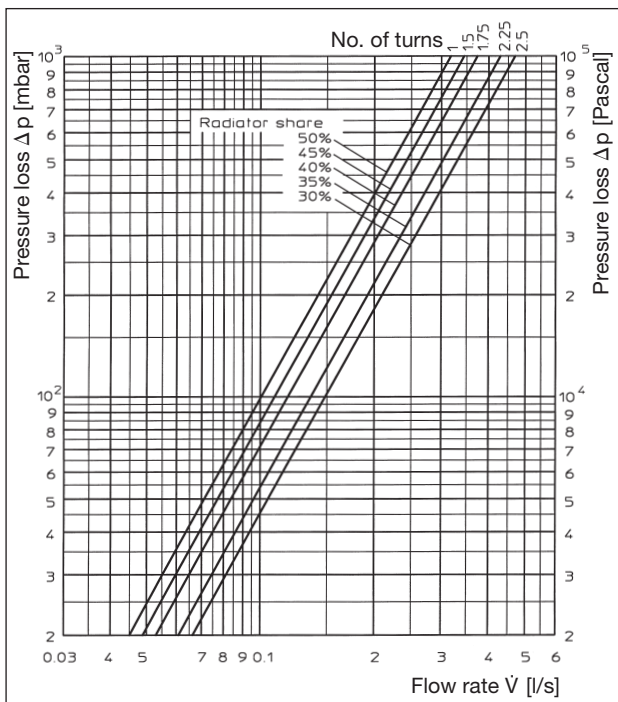
Fittings “Multiflex F”  
soft sealing



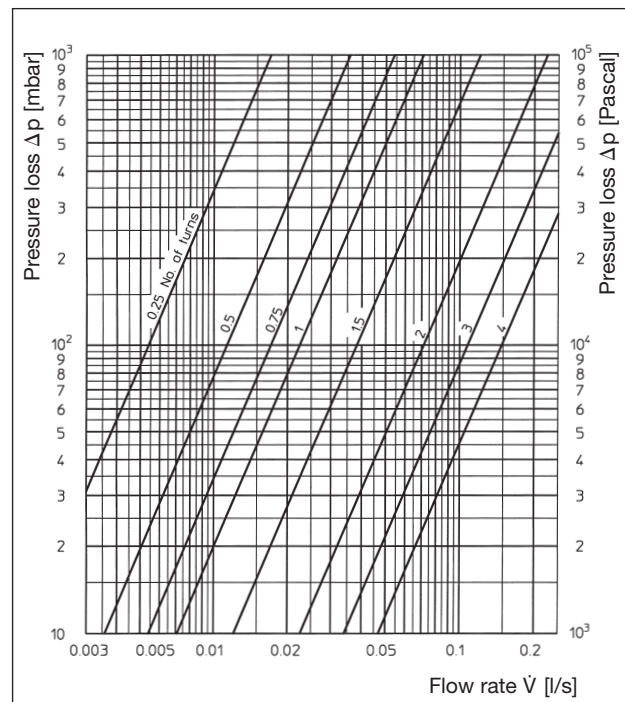
ZB fittings  
Item no. 1015813/14  
1015883/84



ZB fittings, pivoting  
Item no. 1015711/81



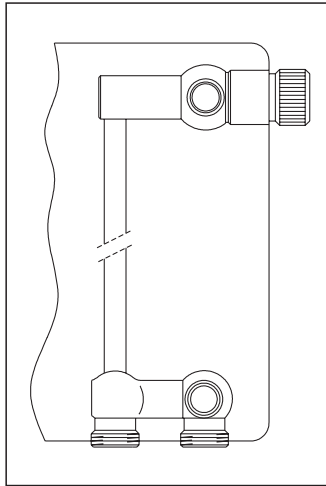
ZBU and CEW fittings  
in one pipe operation



ZBU fittings and single fittings  
in two pipe operation

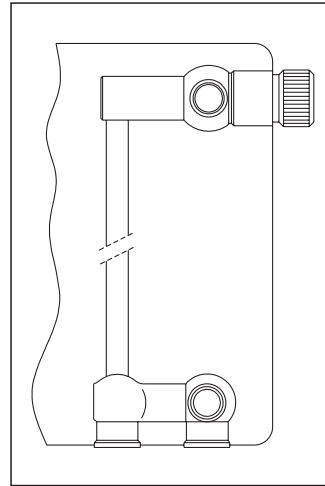
Presetting	0.25	0.5	0.75	1	1.5	2	3	4
$k_v$ value	0.060	0.126	0.190	0.250	0.420	0.819	1.236	1.700

Fittings "Multiflex"



Radiator manufacturers:  
 Baufa  
 Brötje  
 Brugman  
 Buderus  
 De'Longhi  
 Kermi  
 Radel  
 Ribe  
 Vogel + Noot  
 (subject to modifications)

Radiator with integrated distributor  
 G 3/4 male thread, distance between pipe centres 50 mm



Radiator manufacturers:  
 Agis, Alarko, Arbonia,  
 Baykan, Bemm, Biasi,  
 Borer, Bremo, Caradon-  
 Stelrad, Celikpan, Concept,  
 Cöskünöz, DEF, Delta,  
 Demrad, DiaNorm,  
 Dia-therm, Dunafer, DURA,  
 Ferroli, HM-Galant, Henrad,  
 Hoval, Hudevad, IMAS,  
 Itemar, Korado, Manaut,  
 Quinn, Purmo, Radson,  
 Runtal, Schäfer, Starpan,  
 Stelrad, Superia,  
 TermoTeknik, Thor,  
 US-Steel, Vasco, VEHA,  
 Zehnder, Zenith.  
 (Subject to modifications).

Radiator with integrated distributor  
 G 1/2 female thread, distance between pipe centres 50 mm

Subject to technical modifications.

Product range 1  
 ti 107-EN/10/MW  
 Edition 2018