

Tender specification:

Oventrop bronze piston type spring assisted check valve PN 25, both ports female thread according to DIN EN 10226 or DIN ISO 228.

Body made of bronze, inner parts made of brass, valve disc with FKM seal.

Application:

The Oventrop piston type spring assisted check valve is suitable for horizontal or vertical installation in the pipework. The valve disc is spring assisted with an opening pressure of 40 mbar (~ 400 mm WG).

The piston type spring assisted check valve is not suitable for use on pulsating flow and must be installed with a minimum of 10 D (10 x nominal pipe diameter) of straight pipe behind the pump.

Application:

Central heating and cooling systems with closed circuits and industrial plants, for operation with non-aggressive, harmless fluids (e.g. water or suitable water and glycol mixtures according to VDI 2035/ÖNORM 5195). Material resistant to: Mineral, heating and hydraulic oils as well as fuels and air.

(The valid rules and standards for the use of these media may restrict the temperature range. Not suitable for gaseous fluids group 1 according to directive 2014/68/EU).

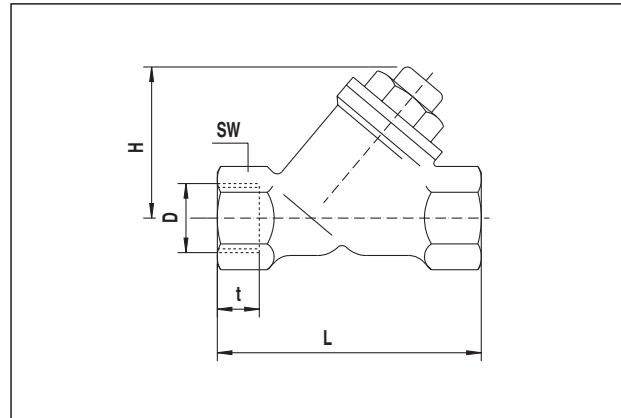
Max. operating pressure p_s : 25 bar (PN 25)

[6 bar (PN 25) for air]

Operating temperature t_s : 0 up to 100°C

[-10 °C up to 120 °C for water]

Size	kvs	Item no.:
DN 10	2.5	1072003
DN 15	3.8	1072004
DN 20	6.0	1072006
DN 25	13.0	1072008
DN 32	17.0	1072010
DN 40	19.0	1072012
DN 50	30.5	1072016



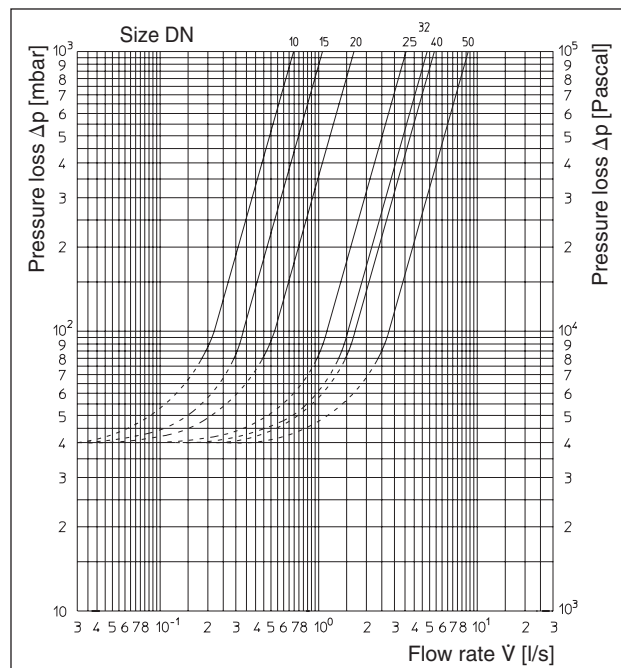
DN	D*	L	H	t	SW**
10	Rp 3/8	63.5	35	10.1	22
15	Rp 1/2	66	43	13.2	27
20	Rp 3/4	75	49	14.3	32
25	G 1	80	55	10.5	41
32	G 1 1/4	97	67	12.5	50
40	G 1 1/2	107	80	14.5	56
50	G 2	124	92	16.5	68

Dimensions

* Rp according to EN 10226

* G according to ISO 228

** SW = Spanner size



Flow chart

Subject to technical modifications without notice.

Product range 5
ti 178-EN/10/MW
Edition 2018